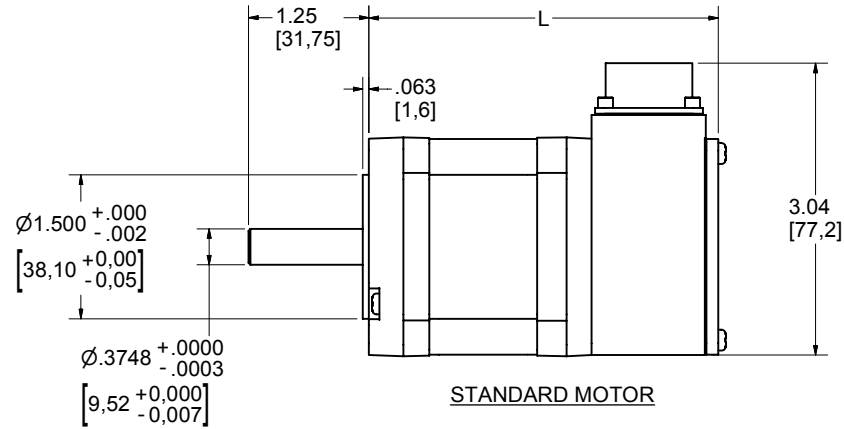
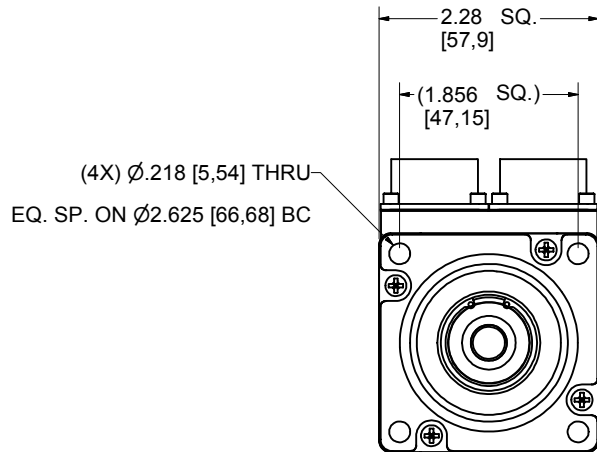


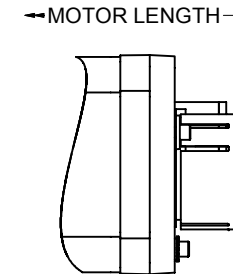
DIMENSIONS IN INCHES [MM]

REVISIONS

REV	DESCRIPTION	DATE	NAME
-----	-------------	------	------



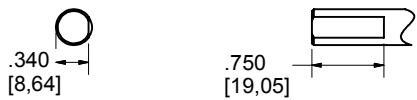
MOTOR SIZE	MOTOR LENGTH, "L"		
	STANDARD	-FO MOTOR	BRAKE OPTION
23-0	3.15 [79,9]	2.5 [64]	4.51 [115]
23-1	3.65 [92,6]	3.0 [77]	5.01 [127]
23-2	4.65 [118]	4.0 [102]	6.01 [153]
23-3	5.65 [143]	5.0 [128]	7.01 [178]



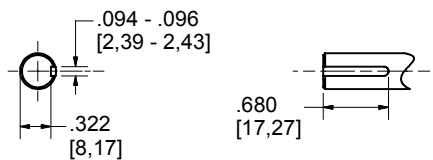
EXPOSED ENCODER (-FO) MOTOR

SHAFT OUTPUT OPTIONS

FLAT OPTION



KEY OPTION



	NAME	DATE	UNLESS OTHERWISE SPECIFIED: DIMENSIONS ARE IN INCHES	MATERIAL:	PARKER HANNIFIN CORP. EMN AUTOMATION DIVISION
DRAWN	JME	8/17/1999	TOLERANCES: FRACTIONAL \pm 1/64 ANGULAR \pm 5 ONE PLACE DECIMAL \pm .02 TWO PLACE DECIMAL \pm .01 THREE PLACE DECIMAL \pm .005 DO NOT SCALE DRAWING	FINISH:	
CHECKED			SCALE: 1.00: 1	COMMENTS:	
ENG APR					
PROPRIETARY AND CONFIDENTIAL THE INFORMATION CONTAINED IN THIS DRAWING IS THE SOLE PROPERTY OF PARKER HANNIFIN CORPORATION. ANY REPRODUCTION IN PART OR AS A WHOLE WITHOUT THE WRITTEN PERMISSION OF PARKER HANNIFIN CORPORATION IS PROHIBITED.					DIMENSIONAL DRAWING SIZE 23, BE BRUSHLESS SERVO MOTOR
SHEET 1 OF 1					SHEET SIZE: C PART NUMBER: